

GENERAL

ALIAPANEL The ARC800 Series Paperless Recorder features the most advanced technology. It can be applied across a broad scope of industrial applications. ARC800 is the product which with multi-channels, complete functions, easy operation, high accuracy, low power but high performance. And the series overcome the old-fashioned paperless recorder, which has less channels, multiple installation and space-consuming problem.

FEATURES

- DIN Size (96 * 96 mm), 320 * 240 Pixels, TFT truecolor (LCD)
- 4 MB memory installed inside, applied to long terms data record
- Common input signal: mA, Include VDC, T/C, RTD, Hz etc.
- High accuracy +/-0.15% of reading
- 2 Relay outputs, 1 analog output (4-20 mA), 1 (24 VDC) power supply output
- 4 Channels Max. input
- 24 VDC Aux. Power supply available for 2 wires system
- Display / Record Single-point, Multi-point, Trend, Totalizer, Bargraph
- The recorded data could be stored in USB memory & SD memory card and transferred to computer for soft analysis

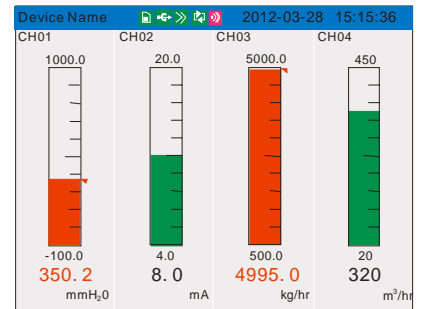
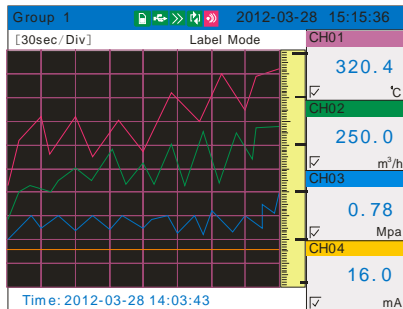
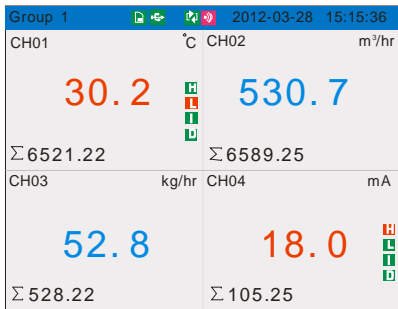
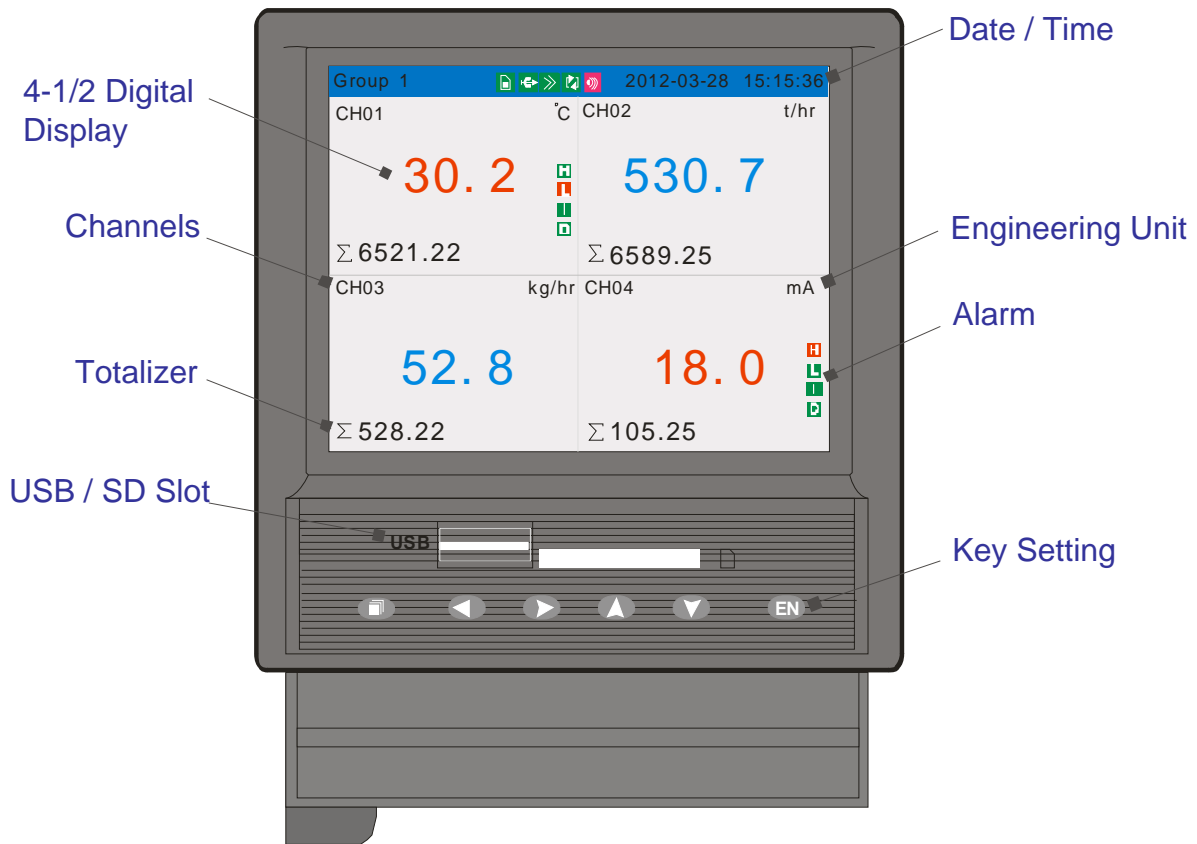


STANDARD SPECIFICATION

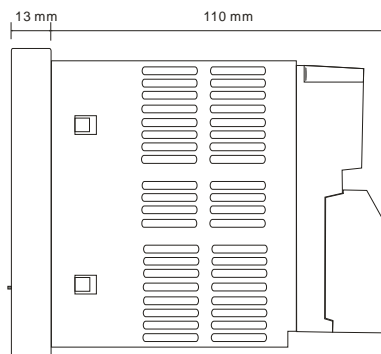
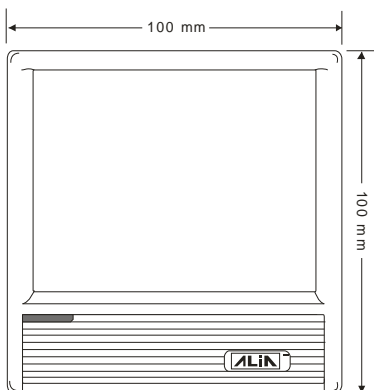
- | | | | |
|------------------------|--|------------------------|---|
| ● Number of Inputs | : 1- 4 Channels | ● Display | : 3.5" Color-screen LCD |
| ● Input | : T/C (K, S, B, E, J, N, T, R, N, etc.) | ● Trend & Bargraph | : Vertical / Horizontal |
| | : RTD, CU50, CU53, BA1, BA2 | ● Digital | : 4-1/2 Digits programmable |
| | : DCA (4-20 mA, 0-10 mA, 0-20 mA) | ● Engineer Unit | : 66 Different engineering units |
| | : DCV (0-5, 1-5 V, 20 mV, 100 mV) | ● Parameter Protection | : Password entry (6 Digits) |
| | : Frequency (1 Hz-5 kHz) | ● Logging Rate | : 1-1800 Seconds Per Data |
| | Resistance (0-400 Ω) | ● Recording Capability | : 72 Hours (4 Points, 1 Data / Second) |
| ● Accuracy | : +/-0.15% of Span | | : 118 Years (1 Point, 1 Data / Hour) |
| ● Response Time | : 50 ms | ● PC Software | : Windows 2000 / XP / Vista / Win7 |
| ● Alarm Types | : High & Low alarm, Incr. & Decr. alarm | ● Display | : Trend, Digital, Circular, Alarm, Bargraph |
| ● Output | : 4-20 mA, Load 750 Ω * 1 point | | Totalizer |
| | : Relay, 3A/250 V * 2 points | ● Convert Function | : Saved as excel files |
| | : 24 VDC, 60 mA * 1 point | ● Protection Class | : NEMA 3 / IP54 |
| ● Digit Input | : 2 Points Maximum | ● Weight | : 0.5 kg Maximum |
| ● Storage Memory | : 4 MB (on board) | ● Dimensions | : 96 mm (W) * 96 mm (H) * 110 mm (D) |
| ● Recycling Mode | : Newest Data overwrites to oldest data | ● Ambient Temperature | : -10-60 °C |
| ● Recording Data Shift | : USB memory (16 GB) / SD Card (16 GB) | ● Ambient Humidity | : 10-85% RH (5-40 °C) |
| ● Display Update Rate | : 1 Second | ● Power Supply | : 85-260 VAC, 50/60 Hz |
| ● Keypad | : 6 Keys (Page, Left, Right, Up, Down, Enter) | | 24 VDC |
| | for programming and display control | ● Vibration Test | : 10-60 Hz ,10 m/s ² for 3 hours |
| ● Parameter Storage | : Operation parameters are stored by EEPROM for more than 10 years | ● Power Consumption | : ≤10 W |
| | | ● Communication | : RS232 / RS485 (MODBUS Protocol) |



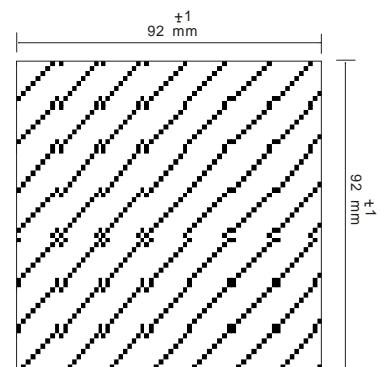
➤ Functions



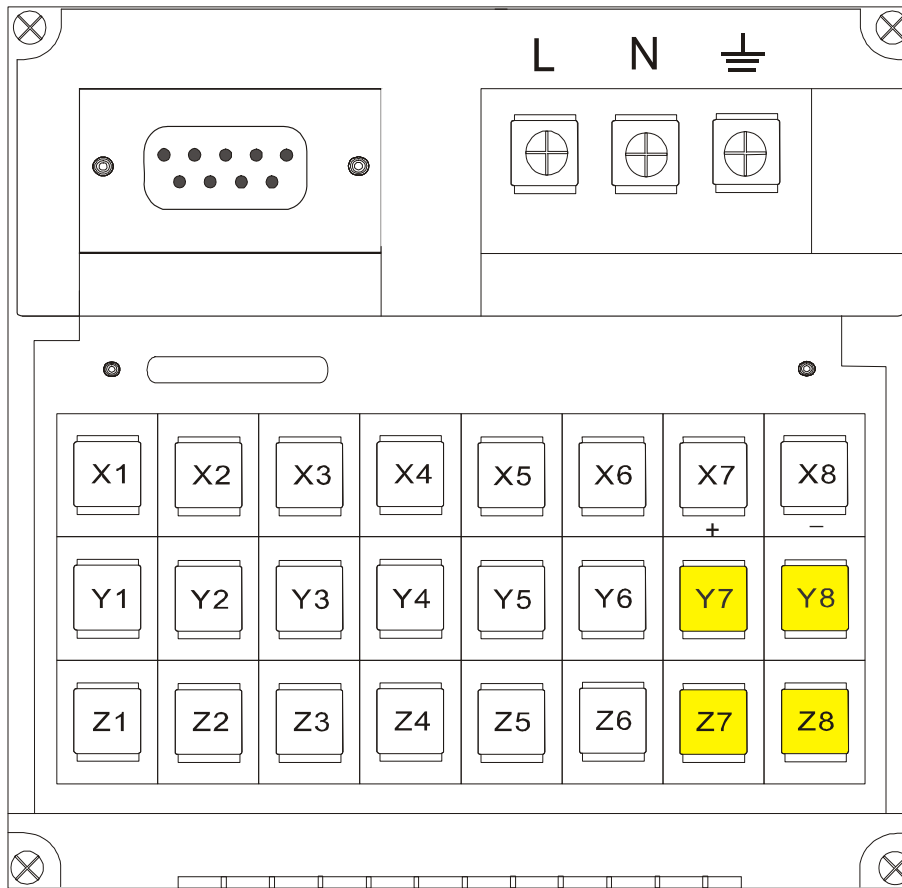
➤ DIMENSIONS



Panel Cutout



➤ WIRING DIAGRAM



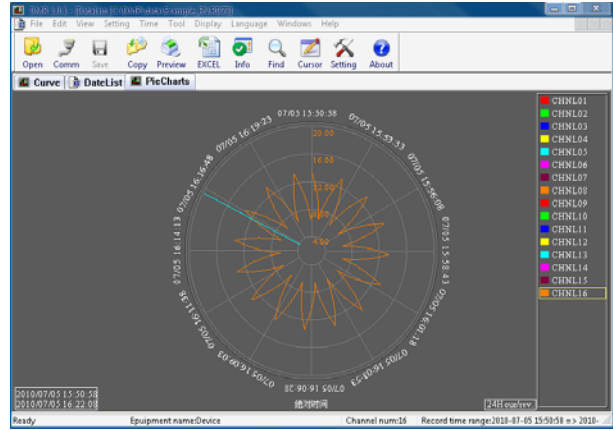
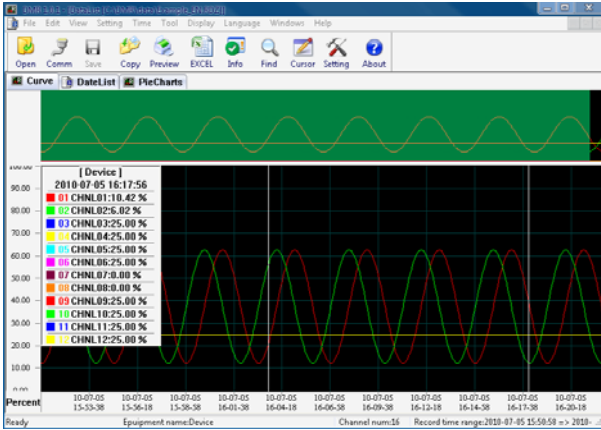
Input		Terminals	
		Input	
		Channel 1-4	X1 / Y1 / Z1 X4 / Y4 / Z4
		Frequency	Y5 / Z5
		Output	
		Relay Channel 1-2	Y7 / Y8 , Z7 / Z8
		4-20 mA	X5 / X6
	24 VDC	X7 / X8	

Output		

Standard Accessory

- * Advanced software Data Analysis at your PC and Remote Viewing
- * 16 GB USB Memory Disk (Advanced Software inside)
- * 16 GB SD Memory Disk (Advanced Software inside)

Advanced Software



MODEL SELECTION GUIDE

ARC800 Series						
Example: ARC800-U4-A-R2-C-DC, Universal Input * 4, 4-20 mA output * 1, Relay Output * 2, RS485 (MODBUS), 24 VDC Power.						
ARC800-	XX-	X-	XX-	X-	XX	Description
Signal Input	U1-					1 Channel Input
	U2-					2 Channel Inputs
	U3-					3 Channel Inputs
	U4-					4 Channel Inputs
Output		N-				None
			A-			4-20 mA Output
Alarm Output			NN-			None
				R1-		Relay Alarm Output (NO), 1 Channel
				R2-		Relay Alarm Output (NO), 2 Channels
Communication				N-		RS232
					C-	RS485 (MODBUS)
Power Supply					AC	85-260 VAC, 50/60 Hz
						DC

Note: Only 1 channel can use frequency input. When choose 1 point from 1-4 channels as the frequency input, the terminals of frequency input must connect to Y5 / Z5.