



# ALIAPANEL

Paperless Recorder  
Model ARC900 Series

## GENERAL

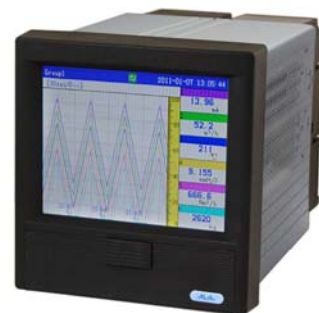
**ALIAPANEL** The ARC900 Series Paperless Recorder features the most advanced technology. It can be applied across a broad scope of industrial applications. ARC900 is the product which with multi-channels, complete functions, easy operation, high accuracy, low power but high performance. And the series overcome the old-fashioned paperless recorder, which has less channels, multiple installation and space-consuming problem.

## FEATURES

- Panel type DIN Size (144 \* 144 mm), 320 \* 240 Pixels, TFT truecolor (LCD)
- 128 MB memory installed inside, applied to long terms data record
- Common input signal, mA, Include VDC, T/C, RTD, Hz... etc
- High Accuracy +/-0.15% of Reading
- Maximum 12 points Relay, 4 point 4-20 mA output and 24 VDC output
- 16 channels maximum input
- 24 VDC Aux. power supply available for 2 wires system
- Display / Record single point, Multi-point, Trend, Totalizer, Bargraph
- The recorded data could be stored in USB memory & SD memory card and transferred to computer for soft analysis
- Outdoor type (IP65), wall-mount, 280 mm (W) \* 242 mm (H) \* 157 mm (D)

## STANDARD SPECIFICATION

- |  |   |
|--|---|
| <ul style="list-style-type: none"> <li>● Number of Inputs : 1-16 Channels</li> <li>● Input : T/C (K, S, B, E, J, N, T, R, N... etc)<br/>: RTD, CU50, CU53, BA1, BA2<br/>: DCA (4-20 mA, 0-10 mA, 0-20 mA)<br/>: DCV (0-5 V, 1-5 V, 0-10 V, 20 mV, 100 mV)<br/>: Frequency (1 Hz-5 kHz)<br/>: Resistance (0-175 Ω, 0-400 Ω)</li> <li>● Accuracy : +/-0.15% of Span</li> <li>● Response Time : 50 ms</li> <li>● Alarm Type : High &amp; Low alarm, Incr. &amp; Decr. alarm</li> <li>● Output : 4-20 mA * 4 points Maximum, Load: 800 Ω<br/>: Relay, 3 A / 250 V * 12 points Maximum<br/>: 24 VDC, 65 mA * 4 points Maximum</li> <li>● Digit Input : 2 Points Maximum</li> <li>● Storage Memory : 128 MB (on board)</li> <li>● Recycling Mode : Newest Data overwrites to oldest data</li> <li>● Recording Data Shift : USB memory (16 GB) / SD Card (16 GB)</li> <li>● Display update Rate : 1 Second</li> <li>● Keypad : 6 Keys (Page, Left, Right, Up, Down, Enter)<br/>for programming and display control</li> <li>● Parameter Storage : Operation parameters are stored by EEPROM for more than 10 years</li> <li>● Option : Temperature &amp; Pressure Compensation</li> </ul> | <ul style="list-style-type: none"> <li>● Display : 5.6" Color-screen LCD<br/>Trend &amp; Bargraph : Vertical / Horizontal<br/>Digital : 4-1/2 Digits programmable<br/>Engineer Unit : 66 Different engineering units<br/>Parameter Protection : Password entry (6 Digits)</li> <li>● Logging Rate : 1-1800 Seconds Per Data</li> <li>● Recording Capability : 120 Hours (16 Points, 1 Data/Second)<br/>: 789 Years (1 Point, 1 Data/Hour)</li> <li>● PC Software : Compatible with Windows 2000 / XP / Vista<br/>Display : Trend, Digital, Circular, Alarm, Bargraph<br/>Totalizer<br/>Convert function : Saved as excel files</li> <li>● Protection Class : NEMA 3 / IP54 (Panel Type) /<br/>IP65 (Outdoor Type)</li> <li>● Weight : 2.6 kg maximum</li> <li>● Dimensions : 144 mm (W) * 144 mm (H) * 219 mm (D)<br/>: 280 mm (W) * 242 mm (H) * 157 mm (D)</li> <li>● Ambient Temperature : -10~60 °C</li> <li>● Ambient Humidity : 10-85% RH (at 5-40 °C)</li> <li>● Power Supply : 85-260 VAC, 50/60 Hz</li> <li>● Vibration Test : 10-60 Hz, 10 m/s<sup>2</sup> for 3 hours</li> <li>● Power Consumption : ≤20 W</li> <li>● Communication : RS232 / RS485 (MODBUS Protocol)<br/>Ethernet Port</li> </ul> |
|--|---|



## ALIA TECHNOLOGY LLC

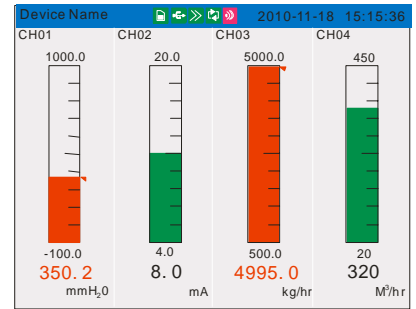
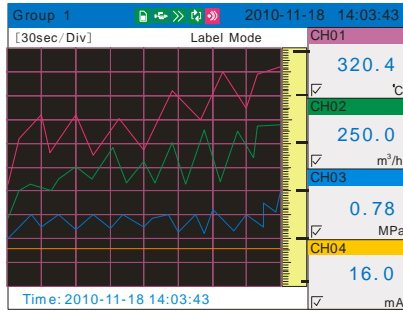
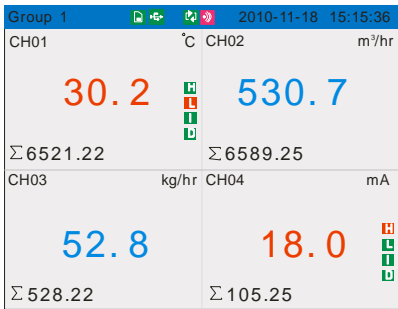
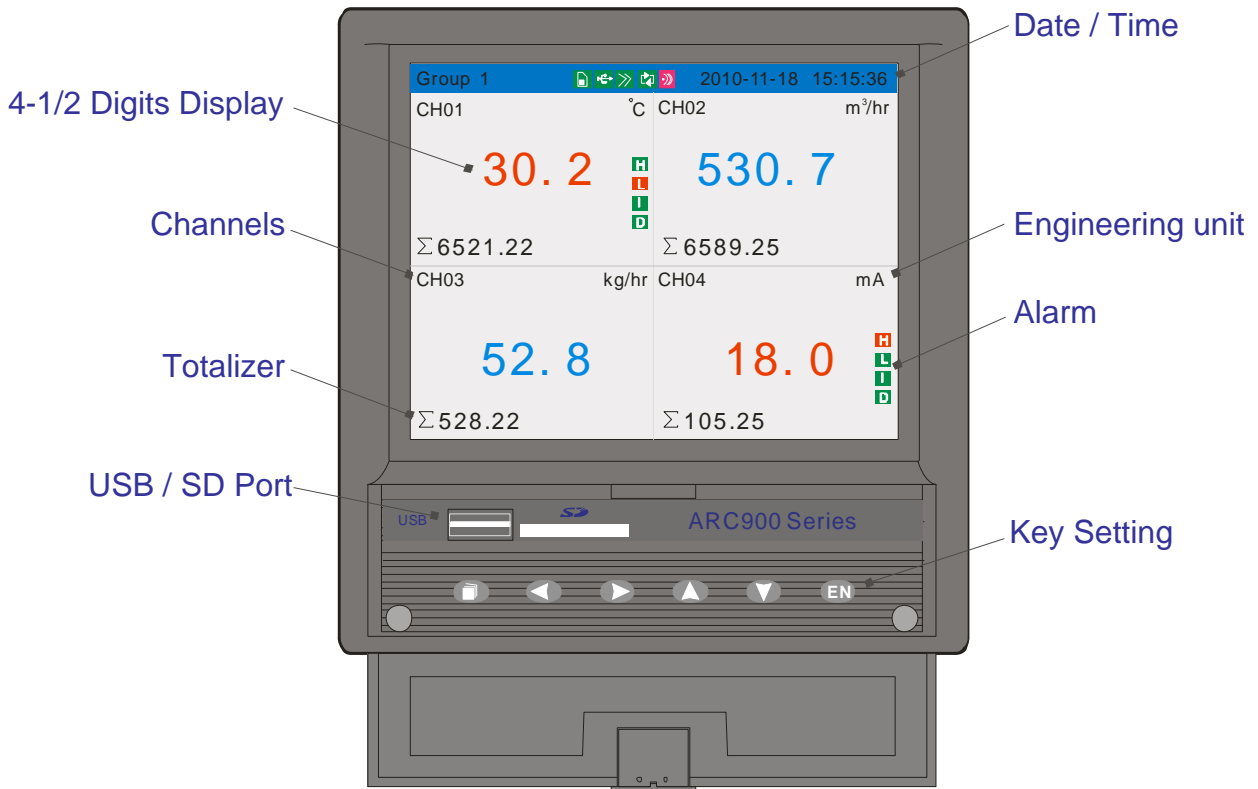
633 W. 5th Street, 26th Floor, Los Angeles, CA 90071, USA  
TEL : + 1 - 213 - 533 - 4139 FAX : + 1 - 213 - 223 - 2317



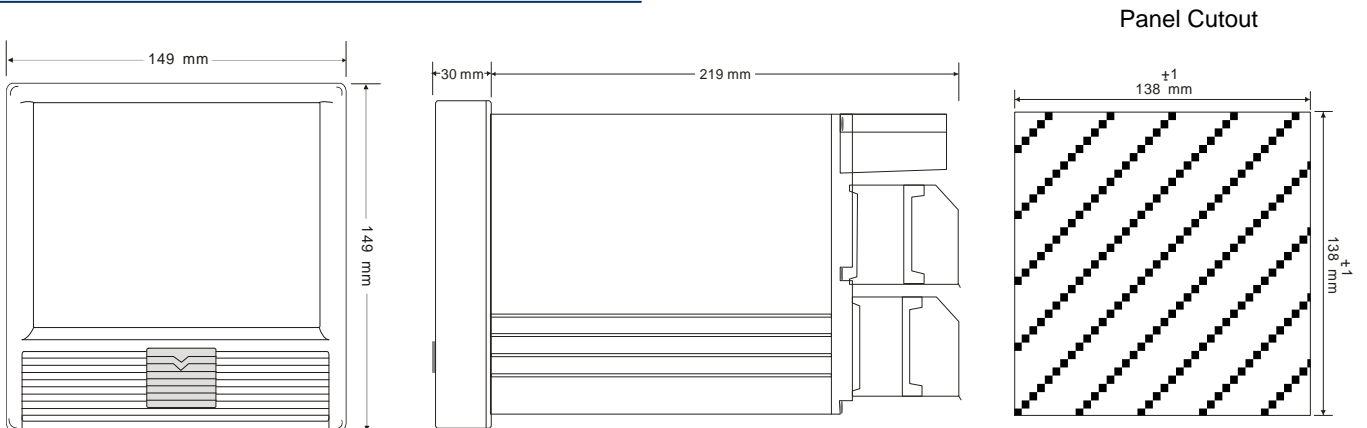
URL : [www.alia-inc.com](http://www.alia-inc.com)  
E-mail : [alia@alia-inc.com](mailto:alia@alia-inc.com)  
ARC900V1.2.2.A4.en



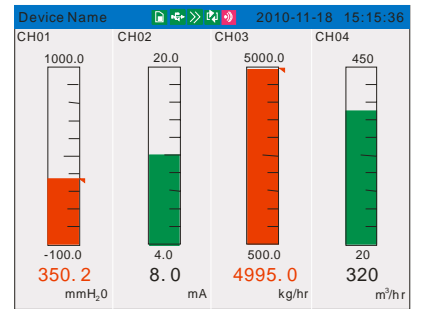
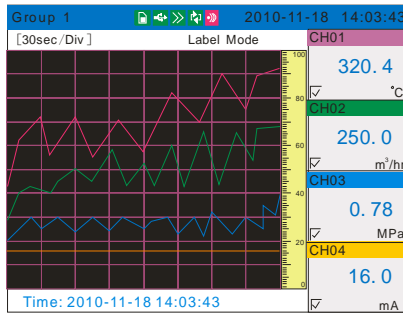
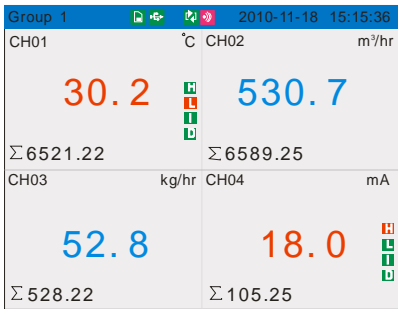
FUNCTIONS (PANEL TYPE)



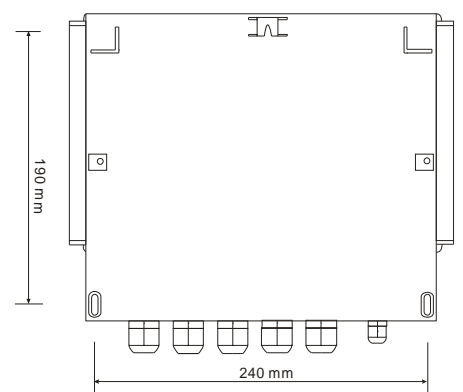
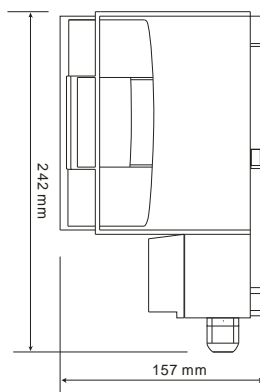
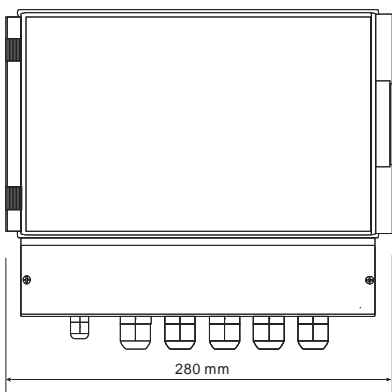
DIMENSIONS (PANEL TYPE)



**FUNCTIONS (OUTDOOR TYPE)**



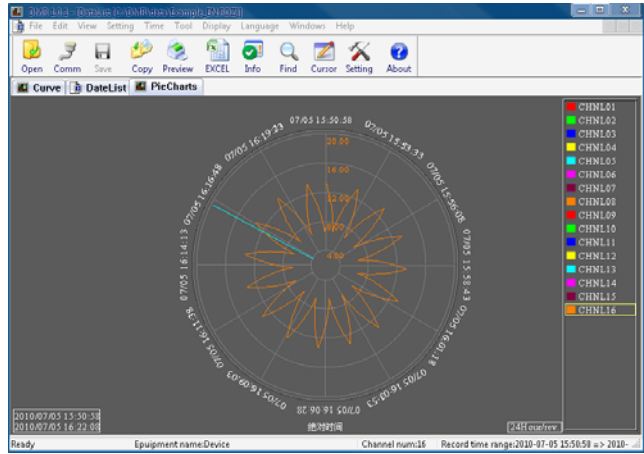
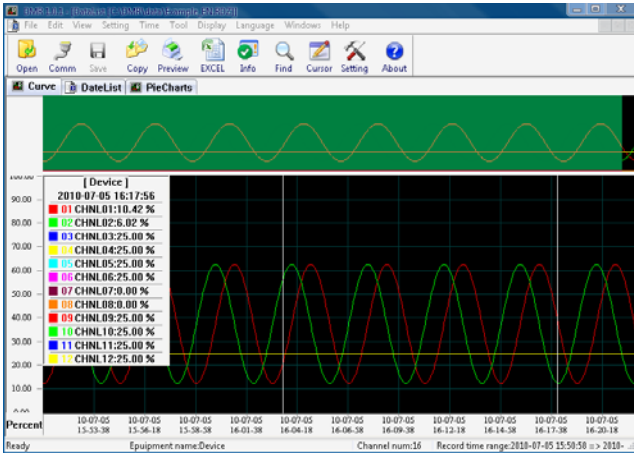
**DIMENSIONS (OUTDOOR TYPE)**



**➤ Standard Accessory**

- \* Advanced software Data Analysis at your PC and Remote Viewing
- \* 16 GB USB Memory Disk (Advanced Software inside)
- \* 16 GB SD Memory Disk (Advanced Software inside)

**➤ Advanced Software**



**➤ MODEL SELECTION GUIDE**

ARC900 Series						
Example: ARC900-U8-F2-R06-C-N, Universal Input * 8, Frequency input * 2, Relay output * 6, RS485 (MODBUS)						
ARC900-	XX-	XX-	XXX-	X-	X	Description
Slot A	U□-					Universal Input, 1-8 Channels
	F□-					Frequency Input, 1-8 Channels (External Power, 2 wire)
	G□-					Frequency Input, 1-8 Channels (12 VDC Power, 3 Wire)
	H□-					Frequency Input, 1-8 Channels (24 VDC Power, 3 Wire)
Slot B	NN-					None
	U□-					Universal Input, 1-8 Channels
	F□-					Frequency Input, 1-8 Channels (External Power, 2 wire)
	G□-					Frequency Input, 1-8 Channels (12 VDC Power, 3 Wire)
	H□-					Frequency Input, 1-8 Channels (24 VDC Power, 3 Wire)
Slot C	A□-					4-20 mA Output, 1-4 Channels (Inapplicable to Outdoor Type)
	NNN-					None
	R□□-					Relay Alarm Output (NO), 1-8 Channels * <b>NOTE 1</b>
Communication	R12-					Relay Alarm Output (NO), 12 Channels * <b>NOTE 2</b>
				N-		RS232
				C-		RS485 (MODBUS)
Option				E-		Ethernet Port (Not Applicable to Option O, C)
				N		None
				O		Outdoor Type IP65, Wall Mount
				M		Mathematics Function (Add, Subtract, Multiply, Divide, Other)
			C		Temperature & Pressure Compensation * <b>NOTE 3</b>	

**Note 1:** When it comes to outdoor type, if Slot B>4, Slot C's channels will be 6 to the most.

**Note 2:** When Slot C selects R12 (Relay 12 Channels) output, Slot B only chooses 4 Channels at most.

**Note 3:** 4 groups of Temperature & Pressure Compensation, Slot A:U8, Slot B:U4.12 channels in total.